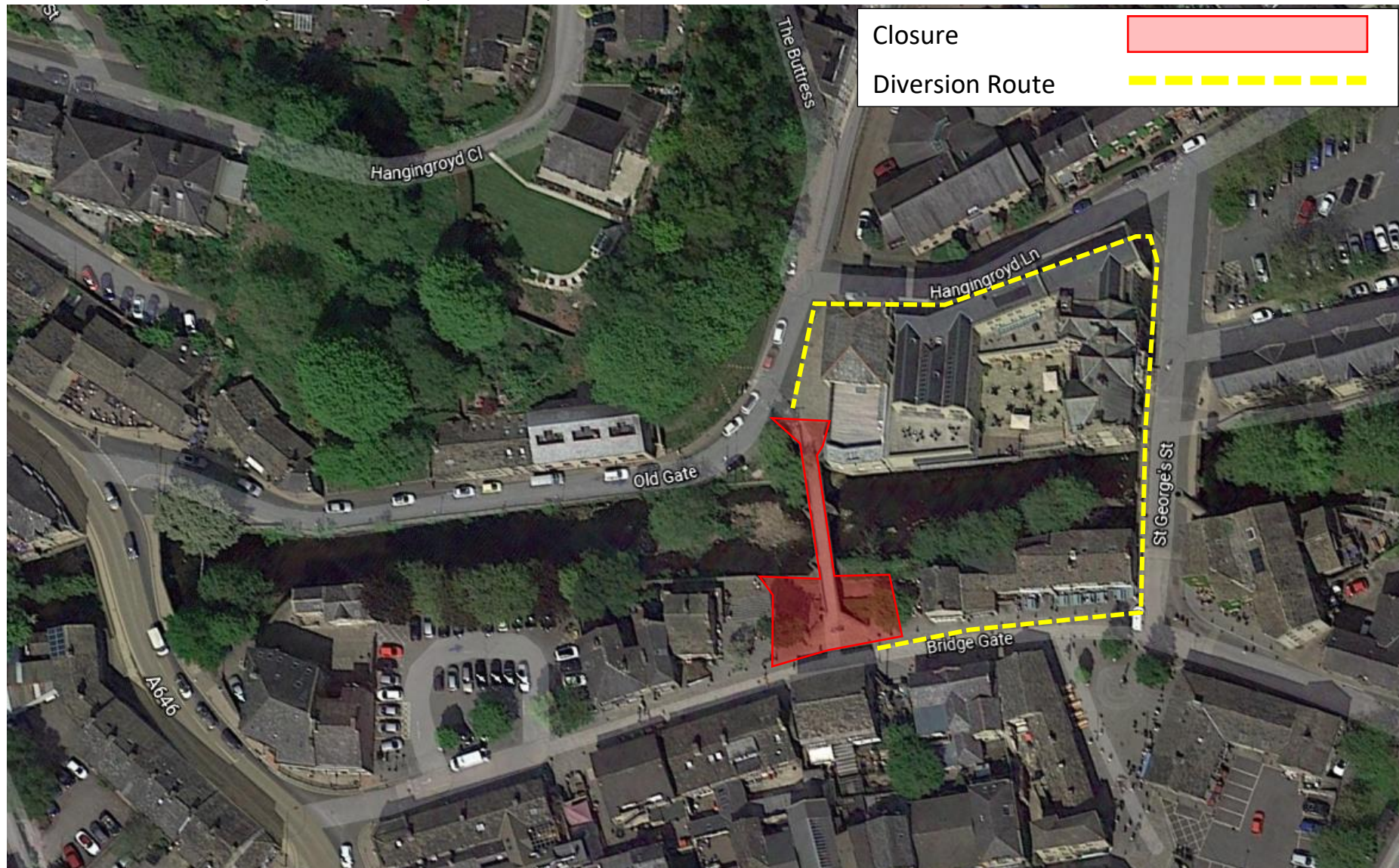


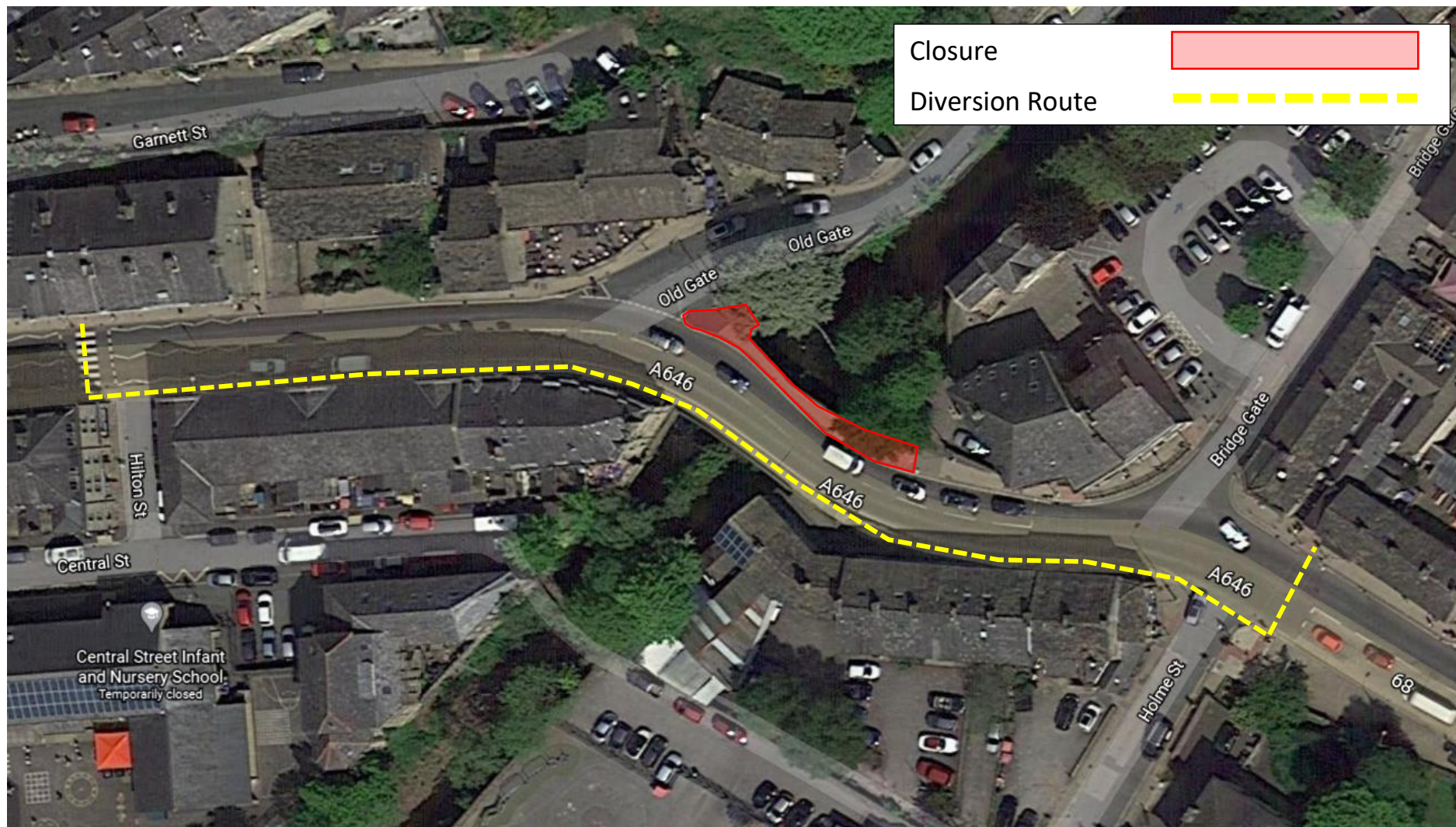
Closure 1: Packhorse Bridge

Dates: 16th June 2020 (07:30 – 17:00)



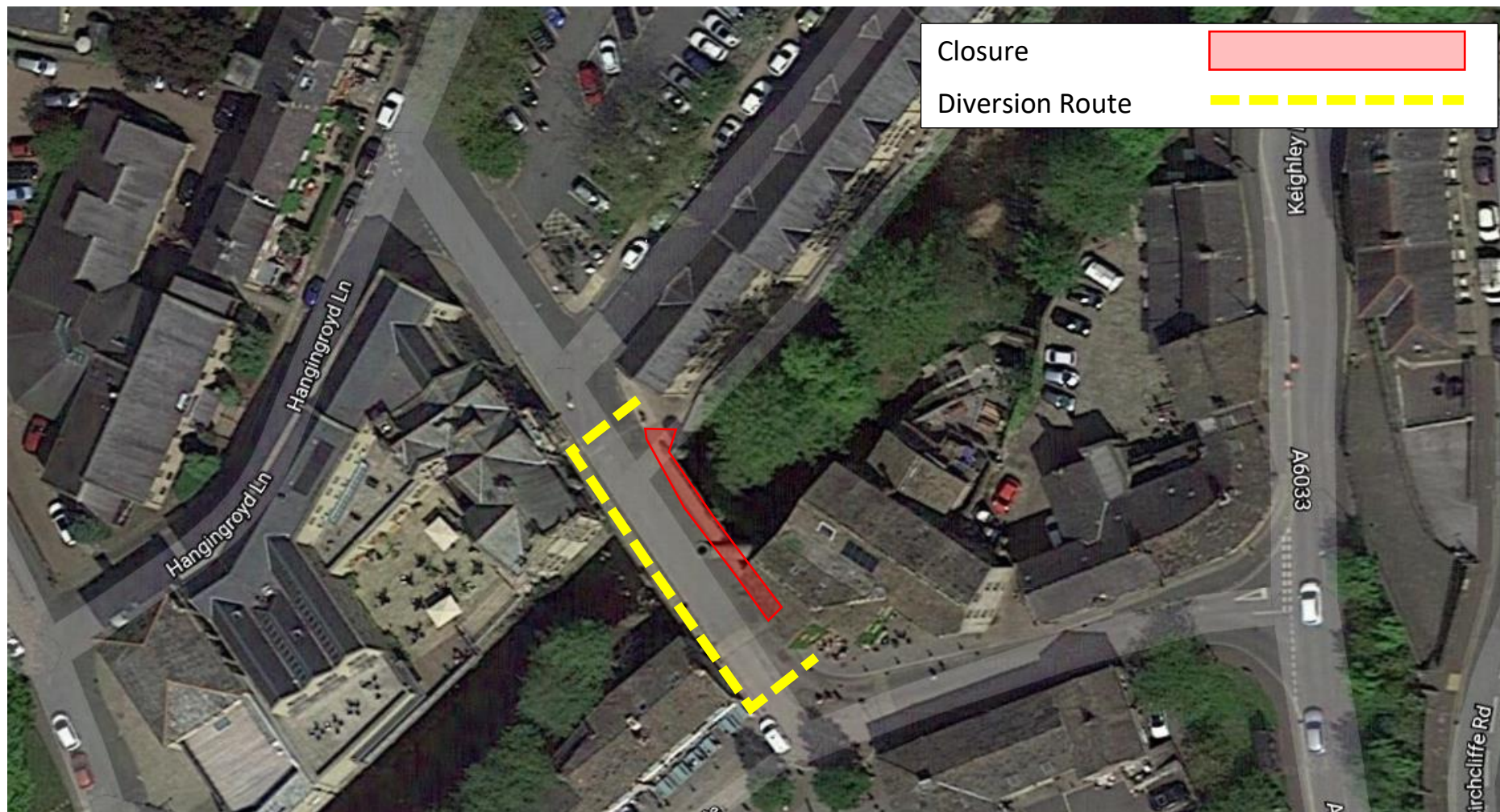
Closure 2: New Road Bridge Eastern Footpath (Western Footpath will remain open)

Dates: 16th / 17th June 2020 and 10th July – 20th July 2020 (07:30 – 17:00)



Closure 3: St George’s Bridge Eastern Footpath (Western Footpath will remain open)

Dates: 29th June 2020 – 9th July 2020 (07:30 – 17:00)



Hebden Bridge Intrusive Survey Works – Footpath Closures